



**Equitable and sustainable wellbeing  
measures  
to support policy making and local  
government in a Province:  
planning study**

Stefania Taralli (Istat)

Paola D'Andrea (Provincia di Pesaro e Urbino)

**Isfol**

*Recognizing the multiple dimensions of poverty: how research can support inclusion policies*

*Rome, 22 May 2012*



Provincia  
di Pesaro e Urbino



## National Statistical Programme 2011-2013

### Planning study

**“Analisi e ricerche per la valutazione del benessere equo e sostenibile delle Province”**

*(Data analysis and statistical research to assess equitable and sustainable wellbeing of Provinces)*

**Promoter and manager:**

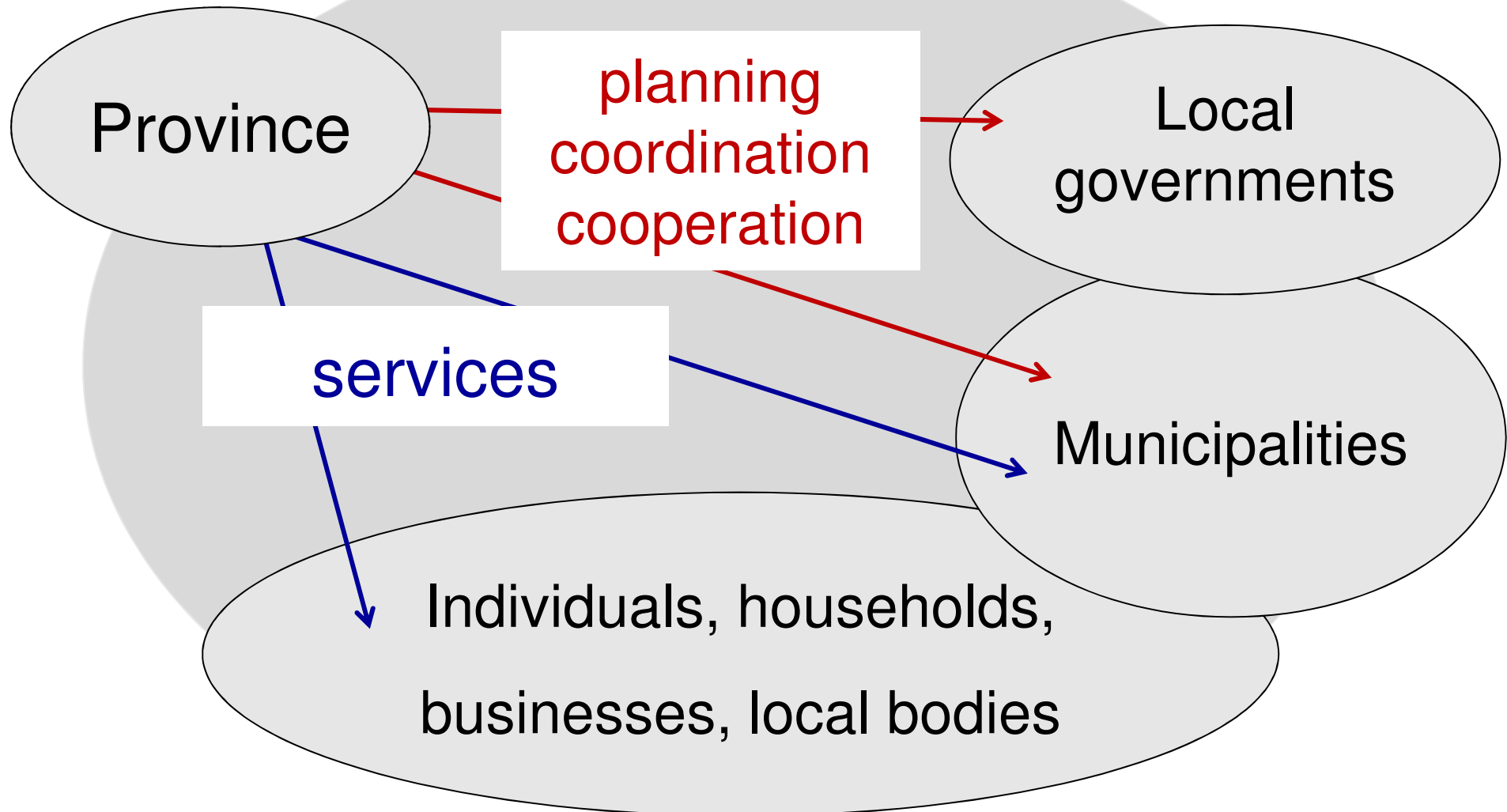
**Statistical office of the Province of Pesaro e Urbino**

**Partner: Istat**

**(scientific supervision and technical support)**



# Functioning of Provinces





Provincia  
di Pesaro e Urbino



# Governance

=

“governing without government”

- Transparency of decision-making process
- Consultation and inclusion of stakeholders
- Accountability of public policies



# Information needs

Indicators to describe context

Indicators to reflect changes

Indicators to measure achievements



# Wellbeing Dimensions (1/2)

Material living standards

Health

Education, training and knowledge

Work, personal activities and reconciliation  
of living and working times

Political voice and governance

Social connections and relationships

.....



# Wellbeing Dimensions (2/2)

.....

Environment

Insecurity (economical and physical )

*Subjective wellbeing*

*Research and Innovation*

*Landscape and cultural heritage*

*Quality of Public Services*



## Geografical framework

Positive perspective	Ecological analysis	Spatial analysis	Normative perspective
	General relevance	Specific relevance	

## Logical framework





## Specific relevance

*How the Province policies  
will affect societal wellbeing?*

A complete taxonomy of

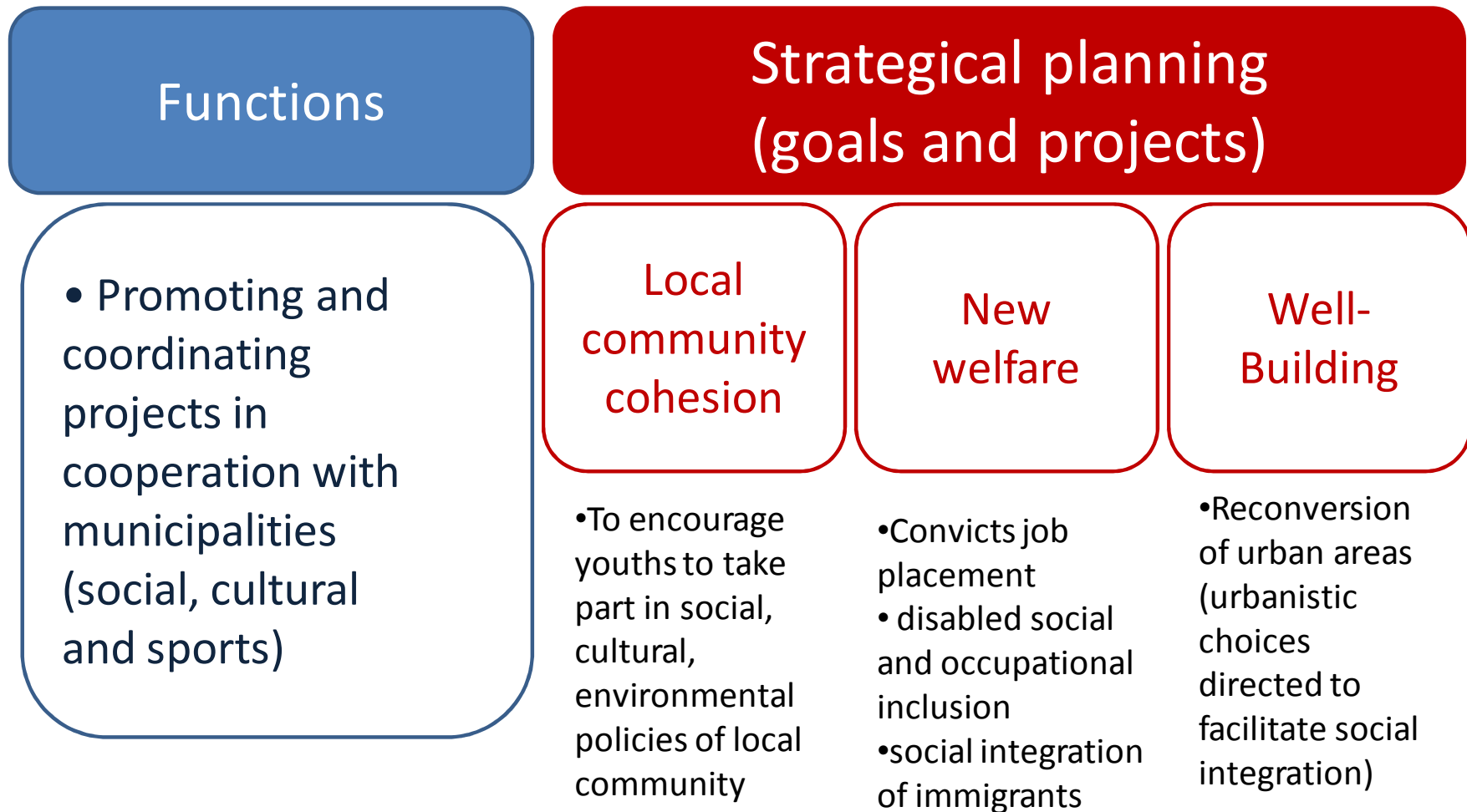
- Functions (conferred by law): 10
- Services (budget-allocation): 24
- Projects (strategical planning): 87



Dimensions <i>Themes</i>	Functions	Services	Projects
Material living standards	1	4	8
Health	1	4	2
Education , training and knowledge	1	7	9
Work, personal activities, reconciliation	-	4	13
Political voice and governance	2	3	13
Social connections and relationships	1	2	7
Environment	5	5	13
Insecurity (economical and /or physical)	3	6	8
<i>Subjective wellbeing</i>	-	-	-
<i>Research and Innovation</i>	4	7	4
<i>Landscape and cultural heritage</i>	2	2	3
<i>Quality of Public Services</i>	6	7	7



## Dimension: Social connections and relationships





Provincia  
di Pesaro e Urbino



## Indicators: insecurity

### General relevance

Fear of being victims of crime

Crime rate

### Specific relevance

People exposed to risk of seismic or hydro-geological disasters

Students attending school in unsafe buildings

Road accidents: trends and dynamics in mortality

.....



## Spatial analysis of inequality

Indicators stratified by geographic location

Measures compared across municipalities or other territorial units of the province (i.e. Local Labour Market Areas – LLMAs)

=

- Geographical associations between disadvantage in one dimension and disadvantage in another one
- Patterns and incidence of multiple disadvantage in different geographical areas



# Reporting indicators required for evidence-based decision making (*examples*)

## *Geographical framework*

different unemployment rates

different levels of educational attainments

different housing conditions

different access to services

.....



Provincia  
di Pesaro e Urbino



## Reporting indicators required for evidence-based decision making (*examples*)

### *Logical framework: Labour market regulation*

Indicators to describe the context:

unemployment rate

Indicators to measure achievements:

% users placed/ total users (job-placement services)



## Reporting indicators required for evidence-based decision making (*examples*)

### *Logical framework: Education and training*

Indicators to describe the context:

Participation in upper secondary level education:  
% enrolled students/ resident population aged 14-18  
(Italians, UE, others)

Indicators to measure achievements:

Complementing the supply of compulsory education:  
% people aged 14-18 enrolled in vocational  
training/resident population aged 14-18 (I, UE, O)





# Information System and Policy Community

Province

Local  
governments

**AGENDA SETTING  
POLICY DESIGN  
ACCOUNTABILITY**

Individuals, households,  
businesses,  
local bodies

Municipalities



Provincia  
di Pesaro e Urbino



SISTAN



## Next steps

2012

- Release of the first set of indicators

2013

- Database extension (new objective indicators, subjective indicators, new stratifications)



# Fundamental requirements

- logical framework consistent with the results of the CNEL-ISTAT initiative
- relevant, reliable, and comparable data and indicators according to principles of official statistics
- priority given to data sources and collection methods that can be maintained (workflows and financial feasibility)



Provincia  
di Pesaro e Urbino



# Wishes

to extend the study  
including other  
Provinces  
(during 2013)



Provincia  
di Pesaro e Urbino



<http://www.statistica.provincia.pu.it/index.php?id=25566>

Ufficio statistica > I Progetti > BES

I Progetti

BES

Censimento degli archivi  
amministrativi delle province

L'attività dell'ufficio

Elaborazioni on-line

Servizi per l'utente

Links di interesse statistico

## Progetto BES: Analisi e ricerche per la valutazione del benessere equo e sostenibile delle province

"Analisi e ricerche per la valutazione del benessere equo e sostenibile delle province" è uno studio progettuale inserito nel Programma statistico Nazionale 2011-2013.

Condotto dall'Ufficio Statistica della Provincia di Pesaro e Urbino con la compartecipazione metodologica e tecnica dell'Istat, ha l'obiettivo di strutturare una solida base di analisi e ricerca a livello locale alla scopo di individuare e definire indicatori di contesto e di risultato in relazione a settori di intervento che siano coerenti con la prospettiva di misurazione del B.E.S. (benessere equo e sostenibile).

Banche dati Statistica



Sistema  
informativo territoriale



*Thank you!*

*Stefania Taralli (taralli@istat.it)*

*Paola D'Andrea (p.dandrea@provincia.ps.it)*